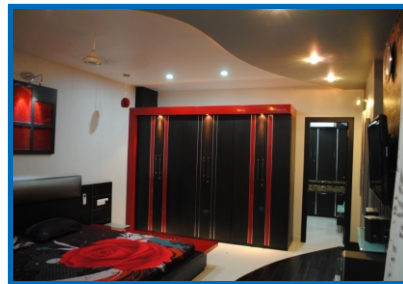


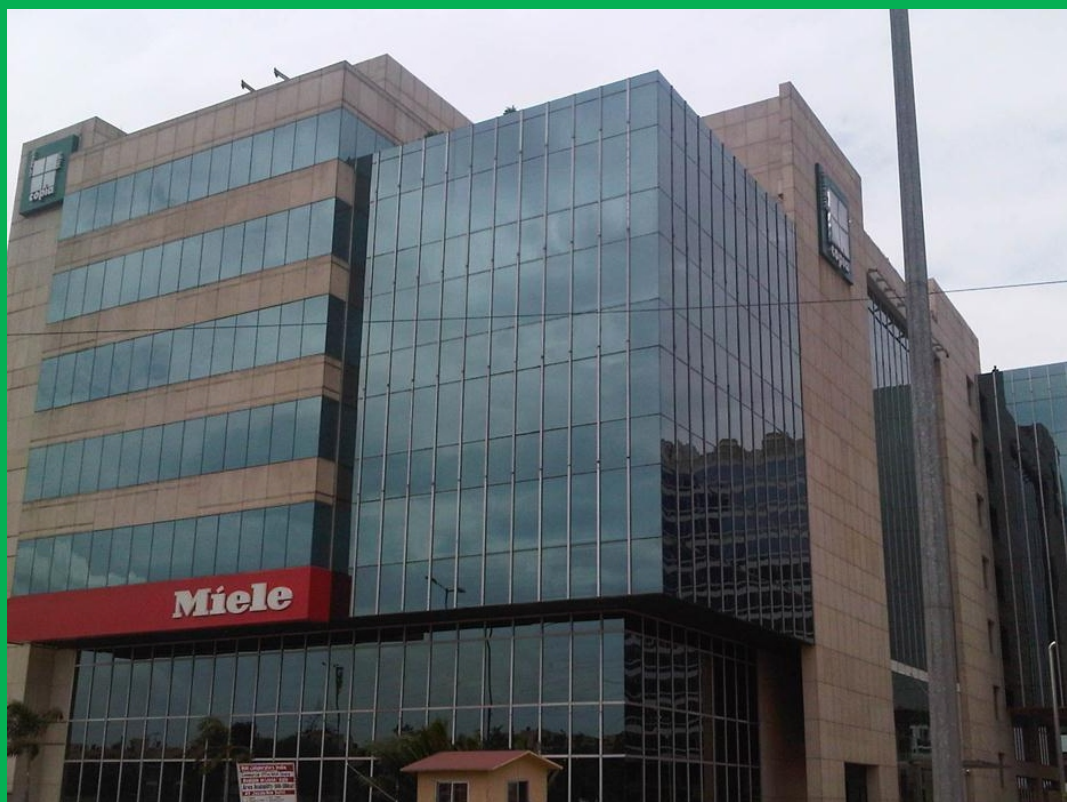
MK **infra** ENTERPRISES PVT.LTD.



MIEPL



**LOOKING FORWARD A LONG TERM AND
HEALTHY BUSSINESS RELATIONSHIP WITH YOU**



ABOUT US

Conceptualized in 2004, we have progressed at a faster pace to be a successful enterprise in the field of interior & exterior designing, Installation & decoration works. Our large community of clients speaks about our success. We have catered our services to star hotels, corporate offices, mansions, bungalows, residences, other organizations and offices. Our designs are exclusive, exotic and our services cordial and valuable. Our team and infrastructure are our greatest assets. We also take care of quality and all the materials that we use are quality tested.

Our mentor Mr. Mohammad Khalid, is an enterprising and creative individual who has leadership qualities and managerial skills. He is the main spring of our clock and keeps our organization ticking all the time. His high values and business ethics have percolated down below to make us a team of values and high professionalism. His five years experience in the industry has added value to the industry. Under his able guidance we are sure to achieve success.

We are successful because of our timely completion of projects and excellent service. Our clients are the most satisfied in the interior & exterior designing, Installation & decoration works. We have high flagged clients and we have dreams of expanding



our infrastructure, team and services. We are technologically advanced people and use high end technologies in all the services that we offer.

We strongly believe in quality first approach, Hence we emphasize on quality planning and quality systems therefore assuring quality service for our customers.

Quality Planning involves preparation of detailed inspection list for all components, equipments and processes prior to acceptance. It involves quality surveillance procedures, designing special instruments for testing (wherever necessary), and developing quality audits.

Quality Systems comprise all elements in the quality control effort. We share these with our customers and make them aware of all quality control systems and quality Plans.

To provide a total Quality assurance , All our supplies are purchased only from original manufacturers and authorized dealers. Moreover, we have developed our Own quality control and safety manuals, these specify many check points at inspection, storage, installation, testing, pre-commissioning and stages.

Mr. Mohammad Khalid
(Managing Director)



OUR STRENGTHS

- **Technical competence**
- **Efficient Project Management**
- **Multi- location Branch offices**
- **Strict compliance with completion schedules**
- **Quality & Safety consciousness**
- **Competitive pricing**
- **Commitment to customer satisfaction**
- **Sufficient Tools & Tackles**
- **Our total strength more than 250+**



QUALITY APPROACH

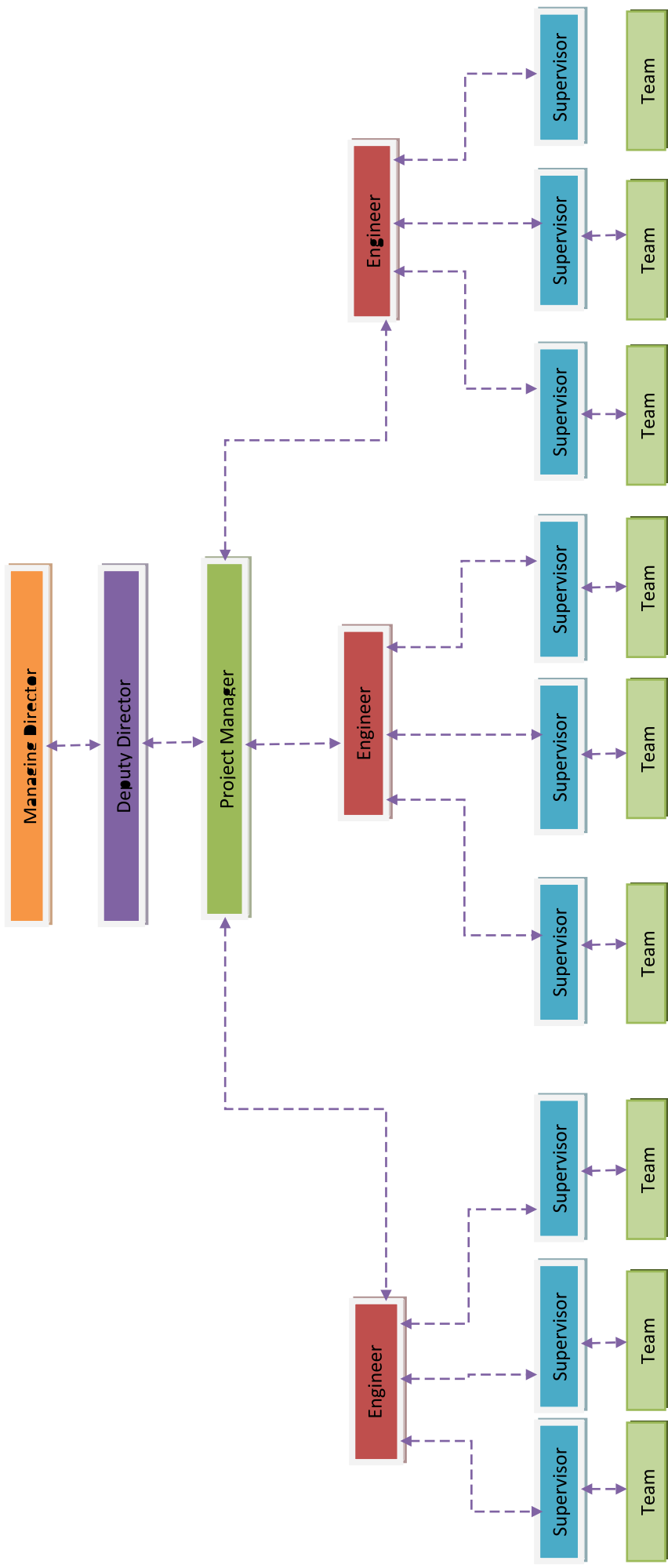
We strongly believe in quality first approach, Hence we emphasize on quality planning and quality systems therefore assuring quality service for our customers.

Quality Planning involves preparation of detailed inspection list for all components, equipments and processes prior to acceptance. It involves quality surveillance procedures, designing special instruments for testing (wherever necessary), and developing quality audits.

Quality Systems comprise all elements in the quality control effort. We share these with our customers and make them aware of all quality control systems and quality Plans.

To provide a total Quality assurance , All our supplies are purchased only from original manufacturers and authorized dealers. Moreover, we have developed our Own quality control and safety manuals, these specify many check points at inspection, storage, installation, testing, pre-commissioning and stages.

Organisation Chart: MK infra Enterprises Pvt. Ltd.



OUR TEAM

At MIEPL Our Senior management constitute some of the best minds in the industry. A combination of knowledge and experience brings solution oriented approach to all jobs. They have a sharp understanding of customers' requirements and carry a strong sense of accountability to their respective projects. Our engineers are well trained and qualified.

Followings the details of some of them:

- Mr. Shahid Hussain (B.Tech-2005) From MDU Rohtak in Civil Engg.
- Mr. Phulvant Kumar Singh (B.Tech-2006) From W.B University in Civil Engg.
- Mr. Jamaluddin Naseem (Diploma-2001) from Directo-rate of technical Education New Delhi in Arch.
- Mr. Khalid Anwar-Draftsman
- Mr. Ravish Gaurav (B.Tech-2010) from W.B University in Electrical Engg.

It is no coincidence that every project, big or small enjoys the involvement of top management. This fact sets us apart from others in our field. Our personnel are fully empowered to take critical decisions. Led by a project manager, the team comprises of experienced engineers, supervisors, electricians and other supporting staff. Everyone is picked according to their project relevant experience.

Everyone in the organization has a customer oriented attitude that form the veryessence of our work culture. It helps to create a productive environment andleaves an everlasting impression with customers.



Ahluwalia Contracts (India) Ltd.



OUR REPUTED CLIENT LIST

- **Bharat Hotels Group**
- **Adiva Healthcare**
- **DMRC**
- **Realtech Group**
- **L & T Ltd**
- **Unitech**
- **Sprit Global Pvt Ltd**
- **Ahluwalia Contracts**
- **GMR**
- **DLF**
- **Unity Infra Projects**
- **Lalit BH group**
- **Voltas Bareilly**

As lists are very few but we have very strong relationships with our clients that's why once we make relations it remains continue.



PROJECTS DETAILS

Projects Done

- **Glass work for DMRC at various Station**
- **ACP Sheet/Structure Glazing at Copia Commercial Complex Jasola, New Delhi**
- **ACP Sheet/Structure Glazing at Marriot Courtyard Gurgaon**
- **All Interior for a commercial Complex at Barbil Orissa with Sprit Global**
- **Interior/Exterior work at Adiva Healthcare Pvt Ltd Green Park, New Delhi**
- **Interior Job at Hotel-The Lalit Jaipur**
- **Interior/Exterior job at Hotel-The Lalit, New Delhi**
- **Exterior job at Amity University G.Noida**
- **Exterior Job at Dhyan Chand National Stadium New Delhi**
- **Electrical Work at MUDP Chandigarh**
- **Internal Electrification at Vertex Bangalore**



PROJECTS DETAILS

Ongoing Projects

- **Interior/Exterior and minor Civil work at Hotel- The Lalit Chandigarh**
- **Interior and minor Civil work at Hotel-The Lalit Great Eastern Kolkata**
- **Aluminum work for Orris Infrastructure Gurgaon**
- **LT Electrification at Voltas Bareilly**



LOOKING FORWARD A LONG TERM AND
HEALTHY BUSSINESS RELATIONSHIP WITH YOU

Thank you



MIEPL

MK *infra* Enterprises Pvt. Ltd.

VISIT US AT: www.mkenterprises.in

WRITE US AT: mk.infra.miepl@gmail.com
mk.delhi2004@gmail.com
service@mkenterprises.in



MIEPL

MK infra Enterprises Pvt. Ltd.

HEAD OFFICE:

772/6, Mehrauli, New Delhi-110030

Ph.: +91-11-26643527

Mob. No.: +91-9871-723-024
+91-9910-281-074

BRANCH OFFICE:

1/1, Jasola Vihar, New Delhi-110025

Ph.: +91-11-65099860,61

Mob. No.: +91-9910-281-074